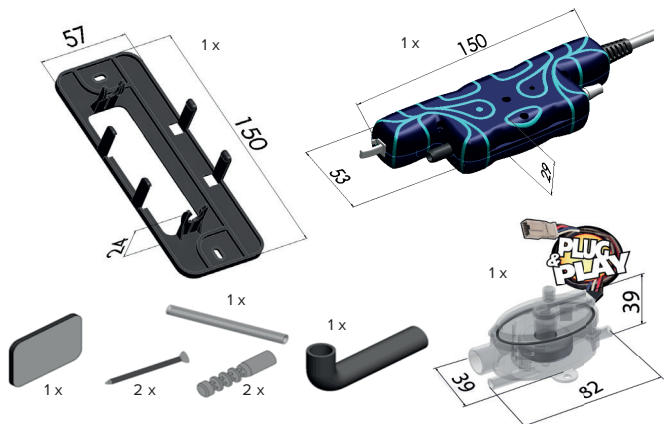
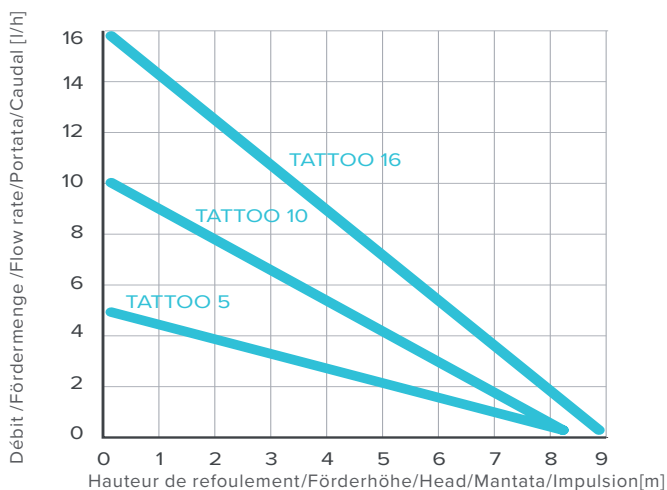




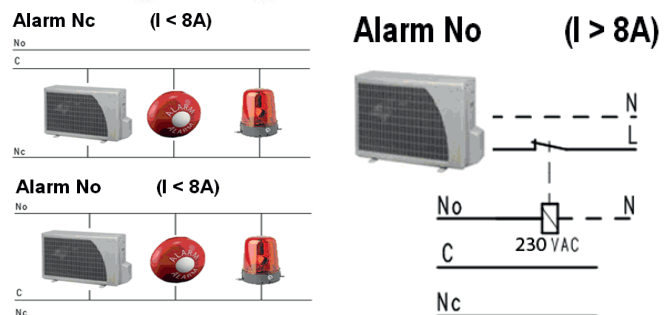
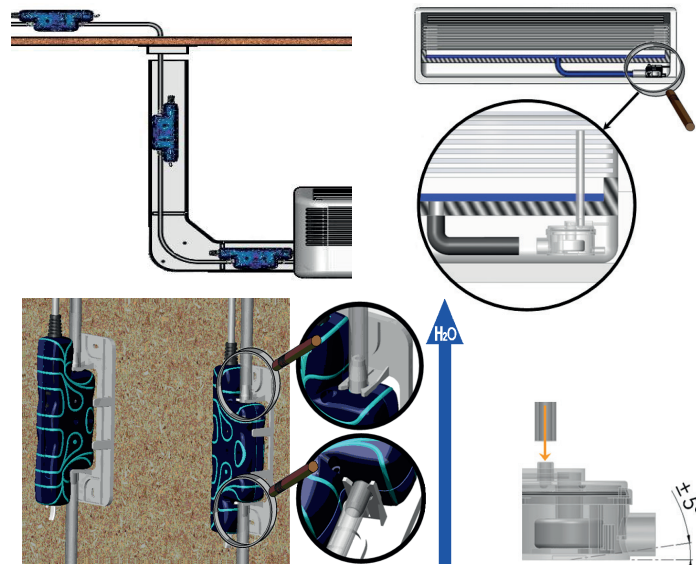
Composants/ Komponenten / Components /
Componenti/ Componentes



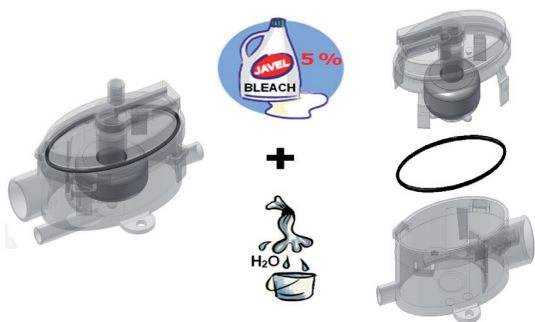
Performances/ Aufführungen /Performances/
Spettacoli/ Actuaciones



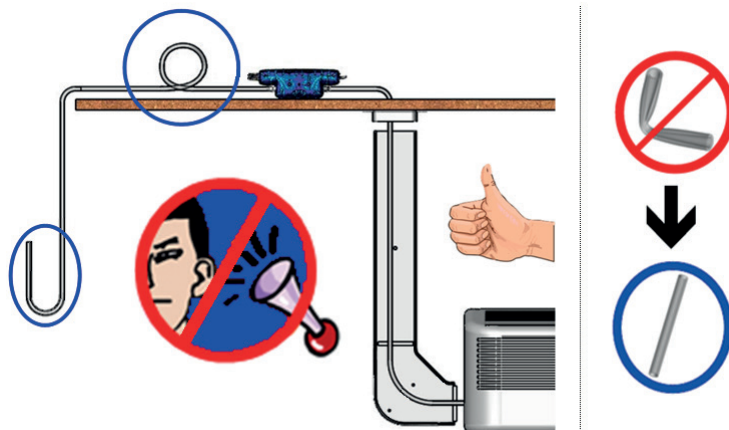
Installation / Einrichtung /Installation /
Installazione / Instalacion



Entretien / Wartung / Maintenance /
Pulizia / Mantenimiento



Conseils / Vorschläge / Advices /
Consigli / Consejos



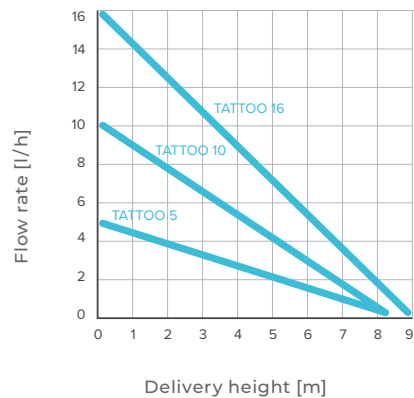
TATTOO 10

DESCRIPTION

The most silent condensate removal system on the market (according to the test report of the Laboratory LNE laboratories in Paris). With plenty of accessories (multi-position mounting plate, 90° elbow to connect the drain pan to the detection unit, Built-in check valve in the pump).



PERFORMANCES



TATTOO 10 TECHNICAL INFORMATION

Sound level	16.4 dB@1m
Max. flow rate	10 l/h (2.6 gal/h)
Max. dry suction height	1 m (3.3 ft)
Max. wet suction height	2 m (6.6 ft)
Max. delivery height (see diagram)	8 m (26.2 ft)
Alarm contact	NO/NC 8A 230V
Dimensions: pump unit	150x54x28mm (5.9x2.1x1.1in)
detection unit	82x39x39mm (3.2x1.5x1.5in)

For air conditioners up to 24'000Btu (cooling capacity)

