

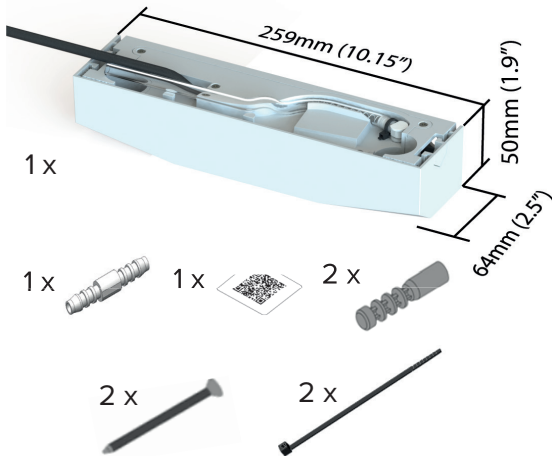


CONDENSATE WATER PUMP

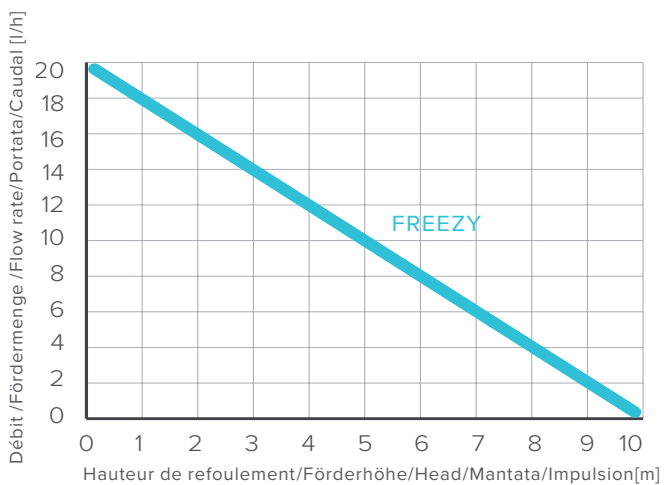
FREEZY

TECHNICAL
DATA
NO.116579

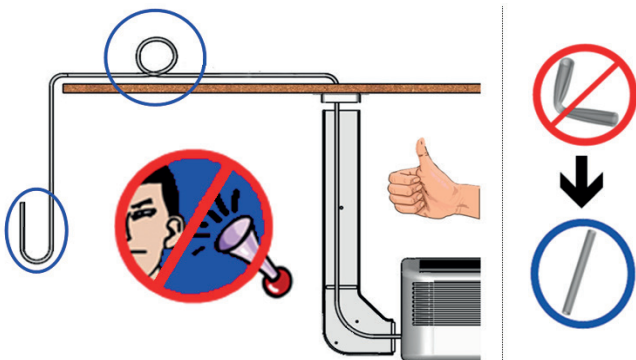
COMPOSANTS/ KOMPONENTEN/ COMPONENTS/
COMPONENTI/ VCOMPONENTES



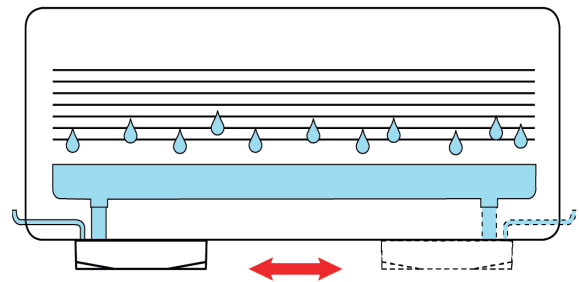
PERFORMANCES/ AUFFÜHRUNGEN /PERFORMANCES/
SPETTACOLI/ ACTUACIONES



Conseils / Vorschläge / Advices /
Consigli / Consejos



INSTALLATION / EINRICHTUNG / INSTALLATION /
INSTALLAZIONE / INSTALACION



La pompe peut être installée à droite ou à gauche sous l'unité de climatisation.

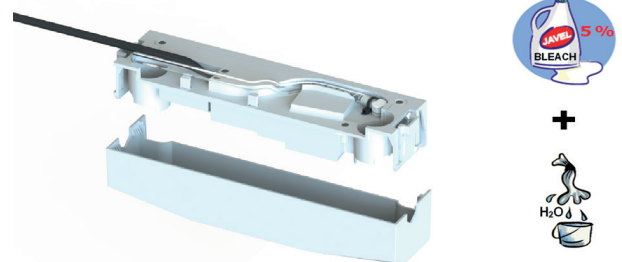
Die Pumpe kann rechts oder links unter dem Klimagerät installiert werden.

Pump can be installed underneath the evaporator on the right or on the left.

La pompa può essere installata a destra o a sinistra sotto l'unità di climatizzazione.

La bomba se puede instalar a la derecha o a la izquierda debajo de la unidad de aire acondicionado.

Entretien / Wartung / Maintenance /
Pulizia / Mantenimiento



Enlever le couvercle et nettoyer une fois par année.

Entfernen Sie den Deckel und reinigen Sie ihn einmal im Jahr.

Dismount the cover and clean it once a year.

Rimuovere il coperchio e pulirlo una volta all'anno.

Retirar la tapa y limpiar una vez al año.



FREEZY



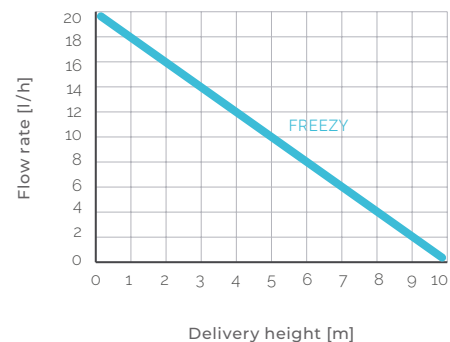
DESCRIPTION

New pump which can be installed directly underneath the minisplit, on the right or on the left side. This pump is embellished with an innovative new detection system, which detects condensate water. Very easy assembly and maintenance. The pump is also "dual voltage", it can be powered in 115V and 230V.

ADVANTAGES

- Super silent pump
- Installation on the right side or on the left side (reversible)
- Easy to install (only 2 elements): mounting plate (with pump and detection system) and cover
- Easy to service: the cover acts as a reservoir
- Dual Voltage: can be supplied with 115V and 230V
- Thermal overload protection 100°C (212°F)

PERFORMANCES



TECHNICAL INFORMATION

Sound level	≤ 21 dB@1m
Max. flow rate	20 l/h (5.3 gal/h)
Max. dry suction height	1 m (3.3 ft)
Max. wet suction height	2 m (6.6 ft)
Max. delivery height (see diagram)	10 m (32.8 ft)
Alarm contact	NO/NC 8A 230V
Dimensions: pump unit	50x63x258mm (1.9x2.4x10.1in)

For air conditioners up to 54'000Btu (cooling capacity)

