

aircoplus

CONDENSATE PUMP AP-18 C€

- **Silent Operation**
- **Reliable and Durable**
- **Big Flow Rate**

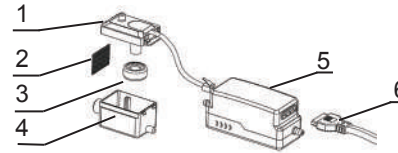




Safety

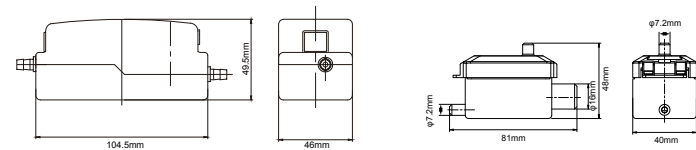
- Before carrying out any operation on the pump, make sure the installation is disconnected from the power supply.
- The pump has been evaluated for use with water only.
- Risk of electronic shock. This pump has not been investigated for use in swimming pool or marine areas.
- If the cord is damaged, it must be replaced with a special cord or assembly available from the manufacturer or its service agent.
- Do not run this pump dry.
- Always ensure the metal magnet in the float is facing upward. Always ensure the reservoir is sitting flat and horizontal.
- The pump is ideal for most working and living environments. It is not recommended where the environment is oily or particularly dusty. Acceptable for indoor use only.
- Non-submersible pump.

1. Pump components:



| No | Description | No | Description |
|----|-------------|----|-------------|
| 1 | Tank cover | 4 | Water tank |
| 2 | Filter | 5 | Pump |
| 3 | Float | 6 | Cable |

2. Dimensions

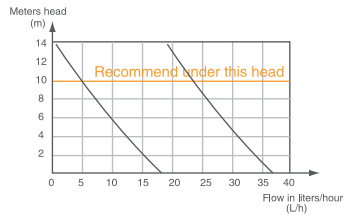


3. Technical specification

| Model | AP-12 | AP-36 |
|----------------------|--------------------|--------------------|
| Voltage | 100V-230V~/50-60Hz | 100V-230V~/50-60Hz |
| Discharge Head(max.) | 10m(33ft) | 10m(33ft) |
| Suction(max.) | 2m | 2m |
| Flow Rate(max.) | 18h(4.8GPH) | 36h(9.6GPH) |
| Tank Capacity | 35ml | 35ml |

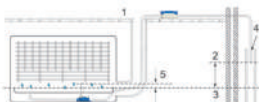
4.Maximum recommended head(m)

FLOW RATE:



5.Preventing siphoning advice

Cut discharge tube above water level of evaporator tray and direct end into large pipe,allowing air break(As following picture)



- ① False ceiling
- ② End of discharge tube
- ③ Water level in drain tray
- ④ Air break
- ⑤ Top of breather tube

6.Installation

- ① Ensure float is positioned in reservoir with magnet uppermost,the filter is in place and the lid is clipped firmly onto reservoir.



- ② Secure reservoir horizontally using velcro strips and for the inline reservoir use the inlet hose to connect firmly to drainage pipe.



- ③ Fit breather tube to reservoir lid.



- ④ Install pump drive unit above the ceiling where possible



- ① False ceiling
- ② Evaporator coil
- ③ Condensate drain tray
- ④ Vinyl tube
- ⑤ Conduit

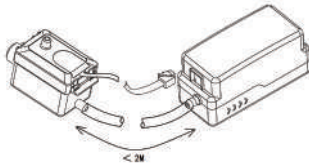
⑤ Anti-vibration assembly



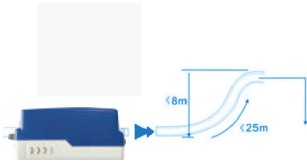
⑥ Note direction of water flow



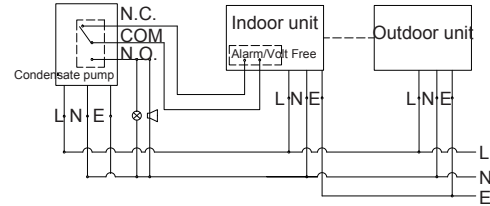
⑦ Push the 9mm o/dx6i/d tube onto the reservoir and the pump. Secure with cable-ties. Ensure length is under 2meters



⑧ Connect your 9mm o/d x 6mm i/d vinyl discharge tube to the outlet barb on the pump and secure with a cable tie. Channel discharge tube to an appropriate drain, avoiding restrictions.



⑨. A high-level alarm switch should be wired into the cooling signal wire, to prevent the continued operation of the air conditioning unit in the event of the pump failing.



Power:

- (L) Live: Brown
- (N) Neutral: Blue
- (E) Earth: Green & Yellow

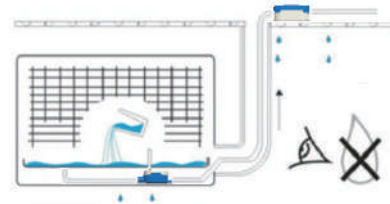
Alarm/volt free:

- (N.C.) Normally closed: Violet
- (COM) Common: Blue
- (N.O.) Normally open: Red

Warning

Make sure the correct power cable to the power supply while 6-pin socket lead assembly.

⑩ Test pump operation by pouring water into evaporator tray. Check for leaks.



Warning:

Please note the distinction between the power line and signal line, wrong wiring will result in damage to the drain pump and ensure consistent product identification voltage.

Warranty:

This warranty covers all parts with material or manufacturing faults. The buyer's only remedy is the replacement or repair of the defective parts. In no case can labor costs and consequential damage be cited as a basis for a complaint. Any returned units must be any on complete and must be accompanied by a written list of the defects returned. We are unable to accept any liability in case of nonconforming installation or noncompliance with the specifications or maintenance recommendations.

Troubleshooting

| Problem | Cause | Action |
|--|---|--|
| Pump runs all the time | The float is positioned with the magnet uppermost | Check the float again |
| | The reservoir lid(sensor)located inside the reservoir,around the sensor column | Check the sensor cable connection |
| | There is sludge inside the reservoir, preventing float from resting on the bottom | This may occur if pump has been in operation for some time without cleaning.Clean using an anti-bacterial wash |
| Pump stops and starts and makes a loud noise | The water is siphoning back through the pump | Preventing the air in the pipe between the reservoir and the pump after installation and during operation |
| Pump runs but does not pump any water | There are some air-leaks in the pipe running to the pump | Check the reservoir and section tube are free of sludge and debris |
| Pump isn't operating at all | The power doesn't reach the pump | Check the power supply |
| | The wire is wrong | Check the power cable |
| | The voltage isn't correct | Check the voltage |

Warm reminder:

Clean the float and filter every 6 month or more frequency