

ISOLATING SWITCH INSTALLATION GUIDE

Thank you for choosing our Isolating Switch product.

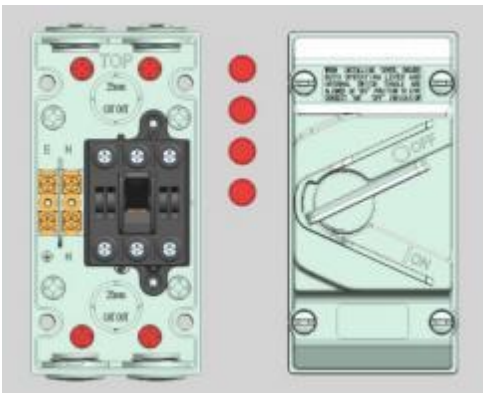
Please read this instruction manual before installation of the product, failure to do so could result in electric shock, fire or other injuries that could be hazardous or even fatal.

This product has no user serviceable parts. If any part is damaged, disconnect from mains and discontinue use.

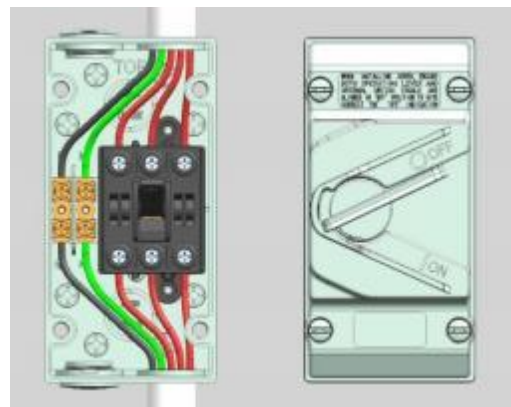
Installation of this product is to be completed by a licensed electrician, in accordance with these instructions and relevant IEC standards and local regulations.

Installation Instructions

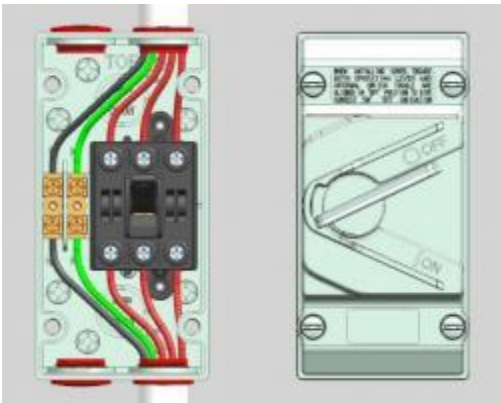
1. After the base is fixed, please fit the caps over screw holes to ensure waterproof rating



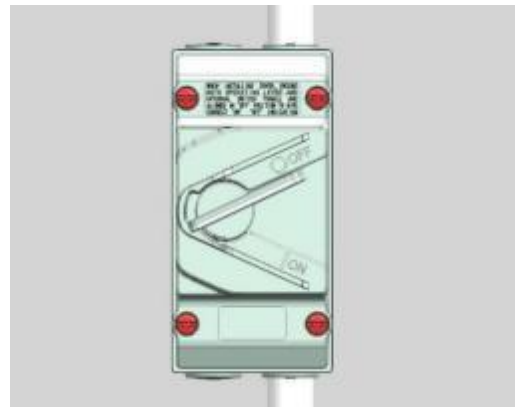
2. Connect the power supply



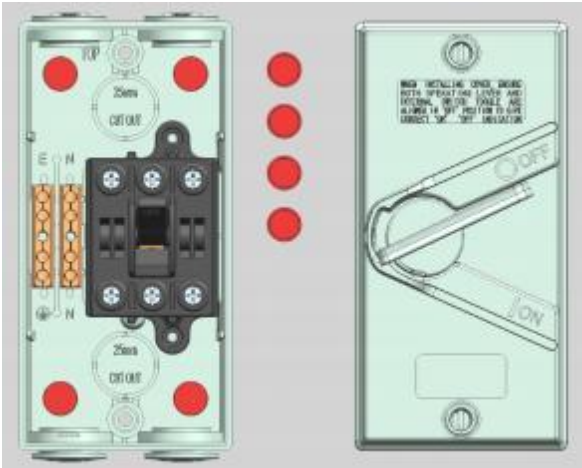
3. Weatherproof glue needs to be used on cable tighten entrance holes used at the top of the Isolator.



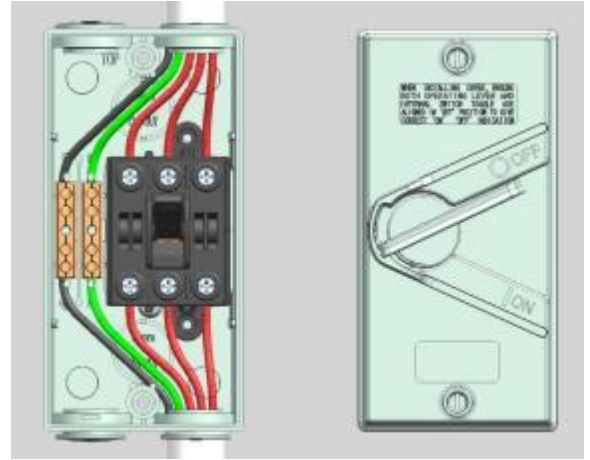
4. Tighten the screws, but do not over



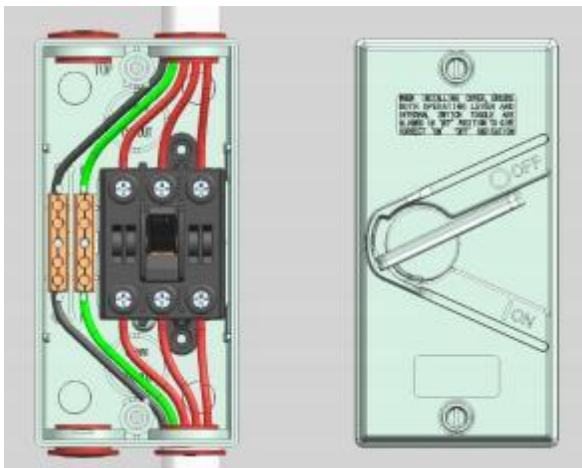
1. After the base is fixed, please fit the caps over screw holes to ensure waterproof rating



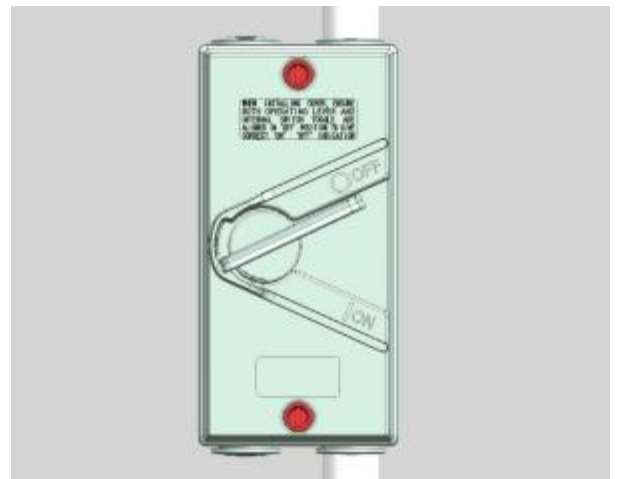
2. Connect the power supply



3. Weatherproof glue needs to be used on cable tighten entrance holes used at the top of the Isolator.



4. Tighten the screws, but do not over



CONDENSATION

Over a period of time, Moisture may form and collect in the unit. This Phenomenon depends on several environmental factors including weather, humidity and variations in temperature and pressure. To help keep the interior of the unit dry we suggest that during installation, consideration be given to **applying suitable mastic sealer** between cables entries, and all joints in the conduit system must be properly sealed. Should condensation persist, it may be necessary to provide small vent facilities at bottom back of unit.

INSULATION Caps

The four 13 mm diameter insulating caps supplied with this unit are designed to cover the base mounting screws. Their purpose is to prevent live wires touching mounting screw heads and help seal the back of the switch from the ingress of water through the mounting holes.